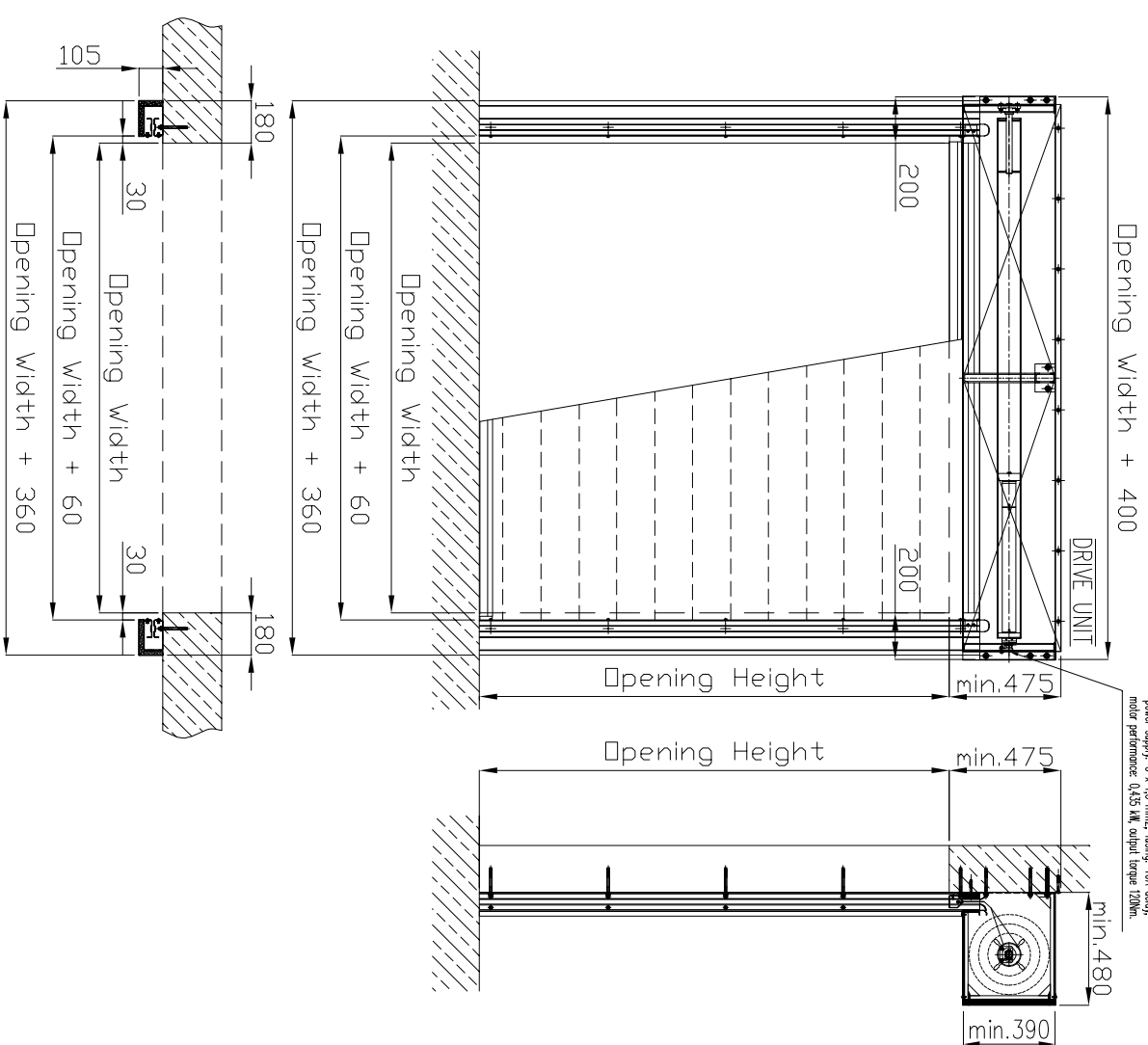
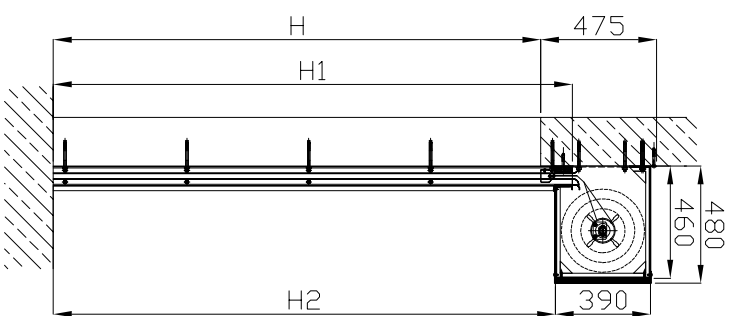


Tubular drive AK120-1 E1120. Gates assembly conditions.

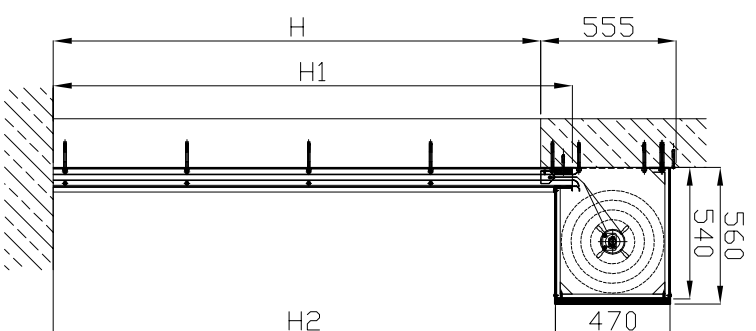
DRIVE UNIT BECKER X120/11W
 operational voltage: 230V AC, 50 Hz
 power supply: 3 x 1.5 mm², using 10A cable
 motor performance: 0.45 kW, output torque 120Nm



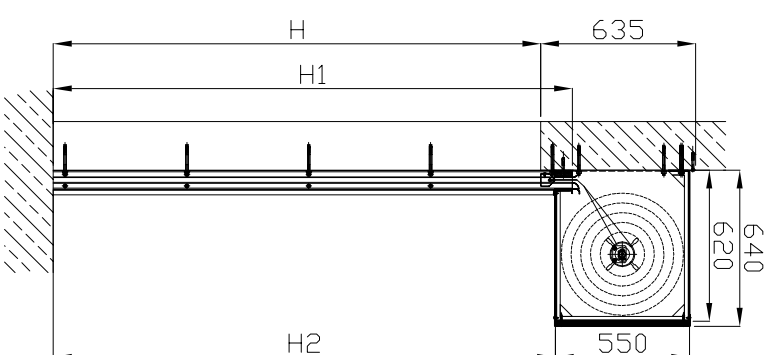
Type 1 housing.



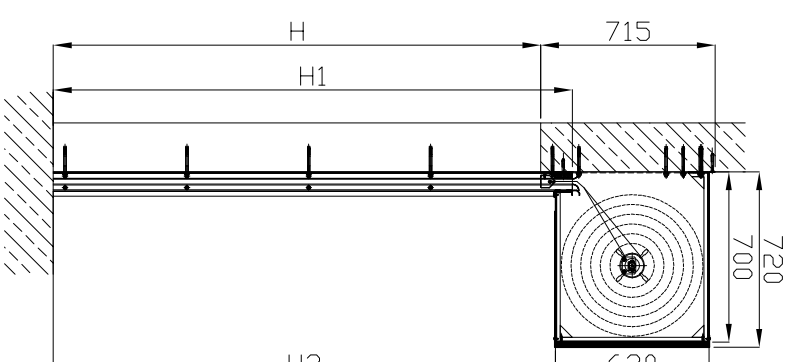
Type 2 housing.



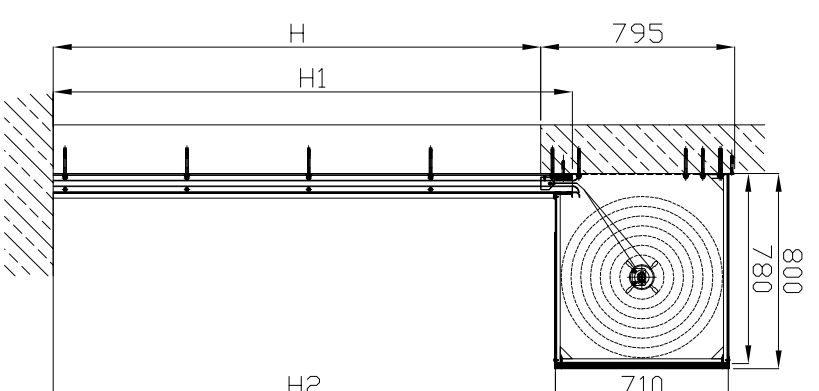
Type 3 housing.



Type 4 housing.



Type 5 housing.



Type 6 housing.

