

INSTALLATION MANUAL – ELECTRIC DRIVE

1-LEAF GUILLOTINE GATE

Table of contents

1. Gate's construction	2
2. Mechanical installation of the gate drive module:	3
3. Electrical connection:	4

1. Gate's construction

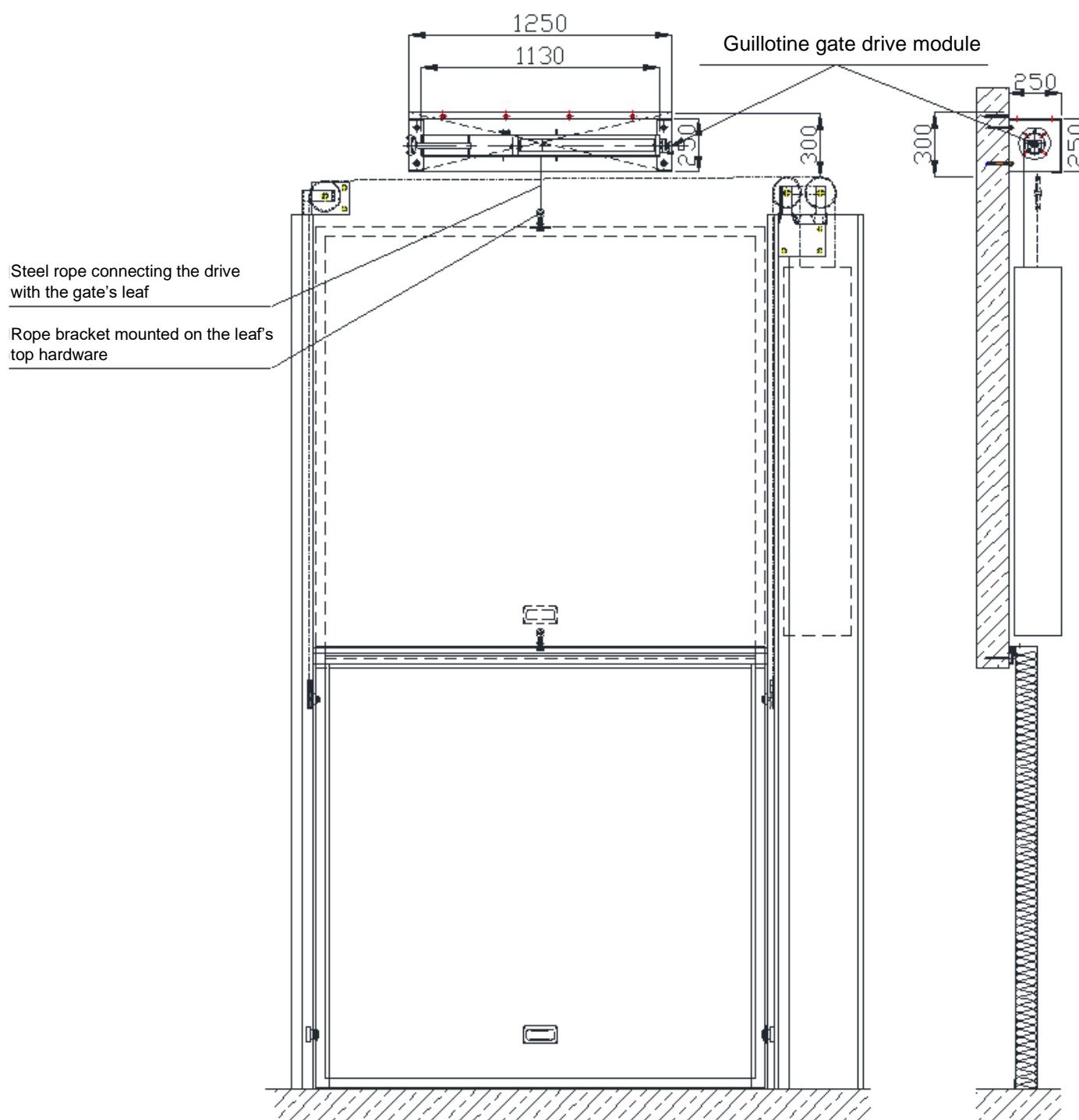


Fig. 1 General view of the gate

2. Mechanical installation of the gate drive module:

Start the installation of the drive by fixing the consoles to the shaft with M10x120 ring anchors, then wind the steel rope onto the winding drum and connect it to the bracket on the top hardware of the gate leaf. After adjusting the gate, setting the limit switches, install the shaft guard according to fig. 3.

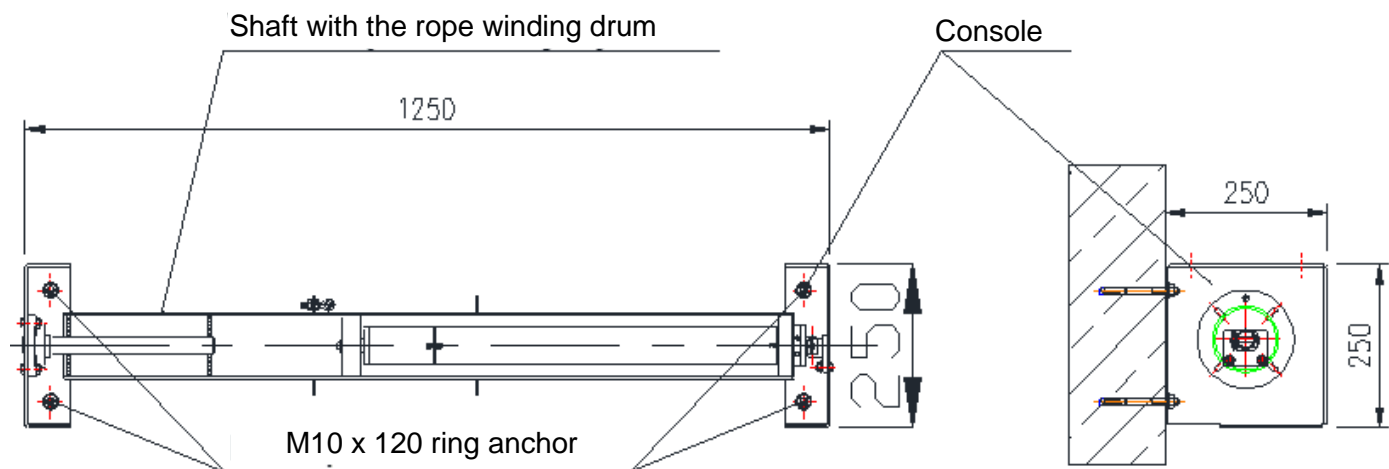


Fig. 2 Installation of consoles supporting the shaft with the winding drum.

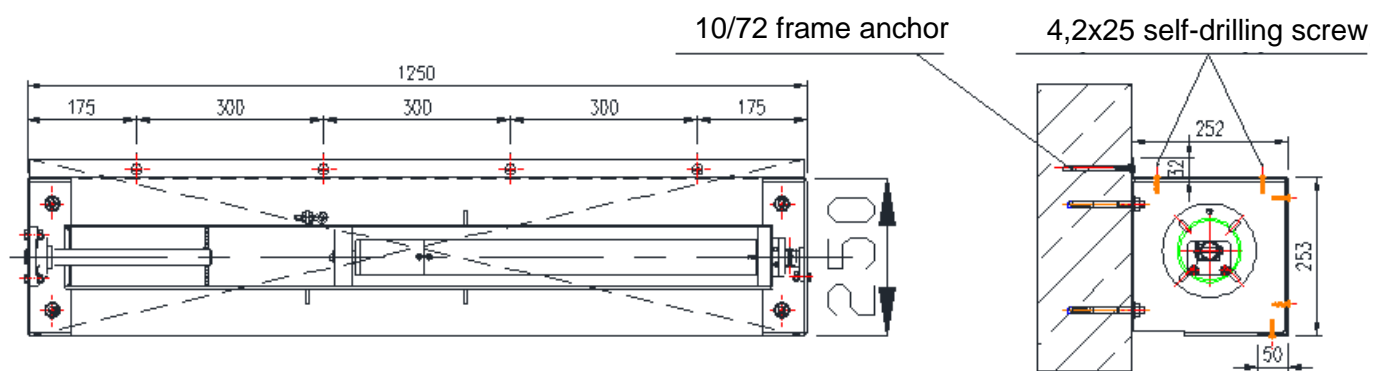
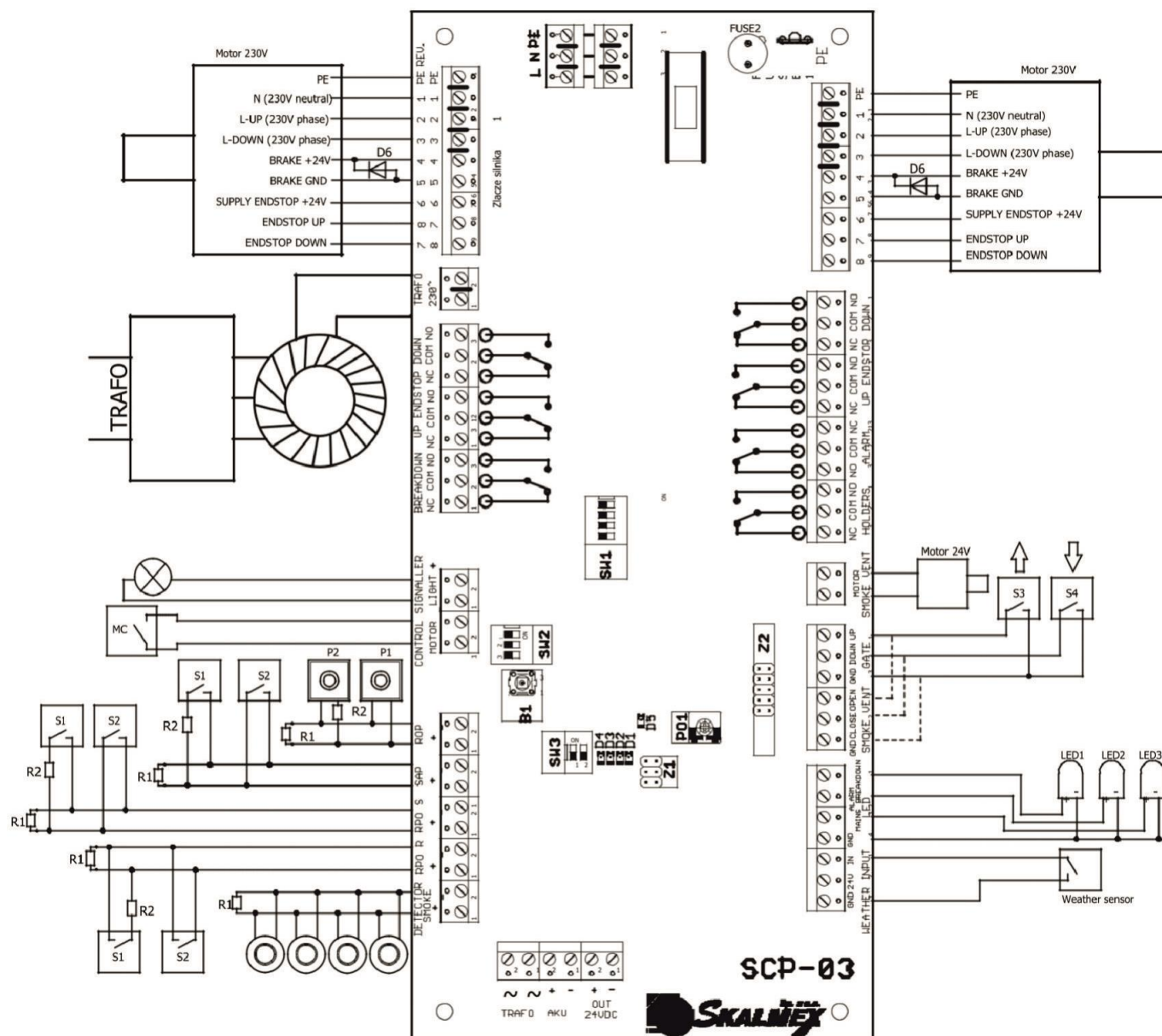


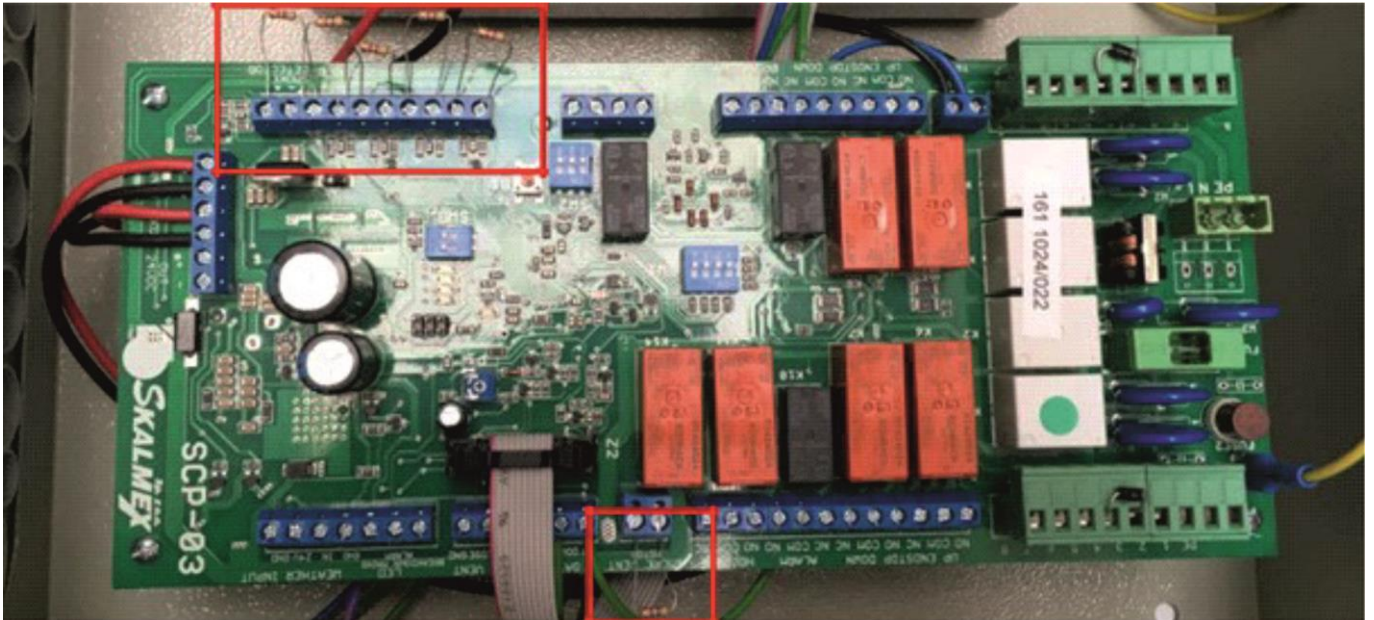
Fig. 3 Installing of the shaft cover.

3. Electrical connection:

STEP BY STEP CONNECTION INSTRUCTION - SCP-03 CONTROL PANEL WITH ACCESSORIES

- Open the front panel
- Batteries are disconnected and protected by a plastic cover
- The panel comes with 4.7k Ohm and 1k Ohm resistors in separate plastic bags
- Connect the 4.7k Ohm resistors as shown in the following figure
- Connect the engine

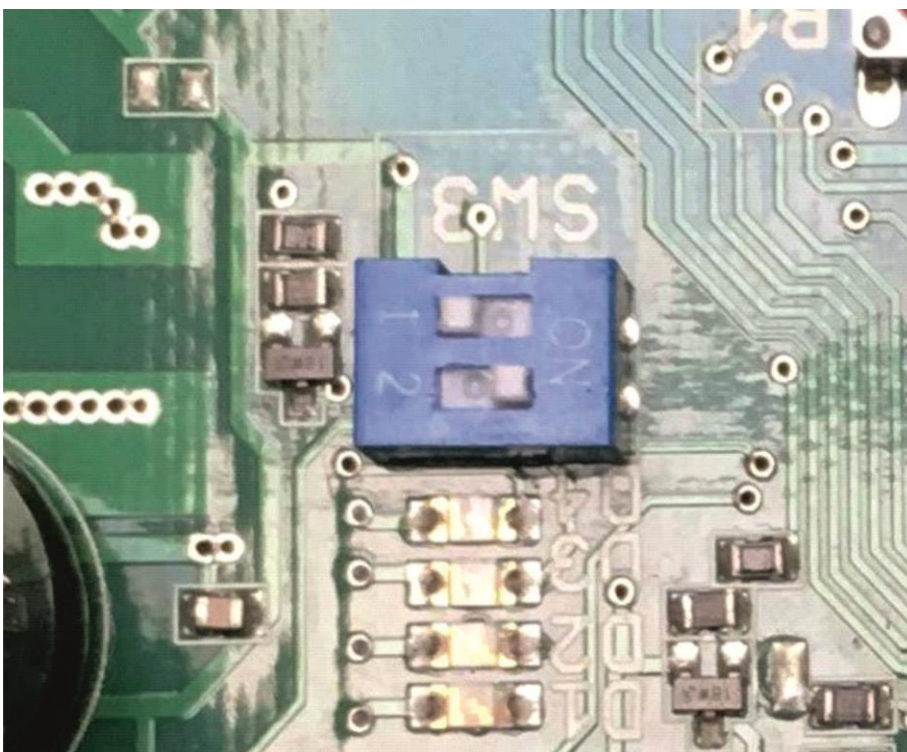




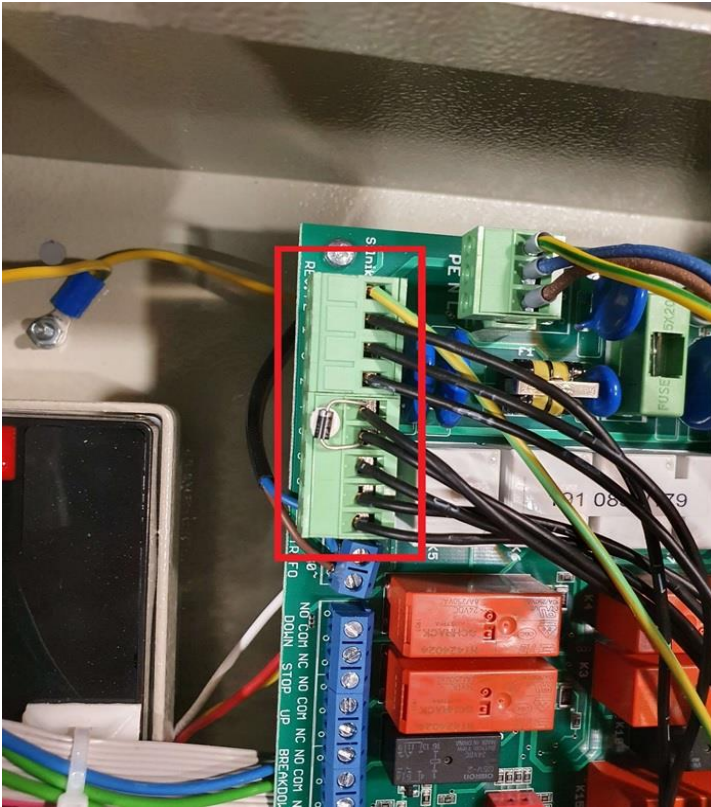
5 resistors to be connected: ROP, SAP, PRO, RPO, SMOKE SENSORS

1 resistor to be connected: SMOKE EXTRACTION (important!)

- Change SW3 switch positions (figure)

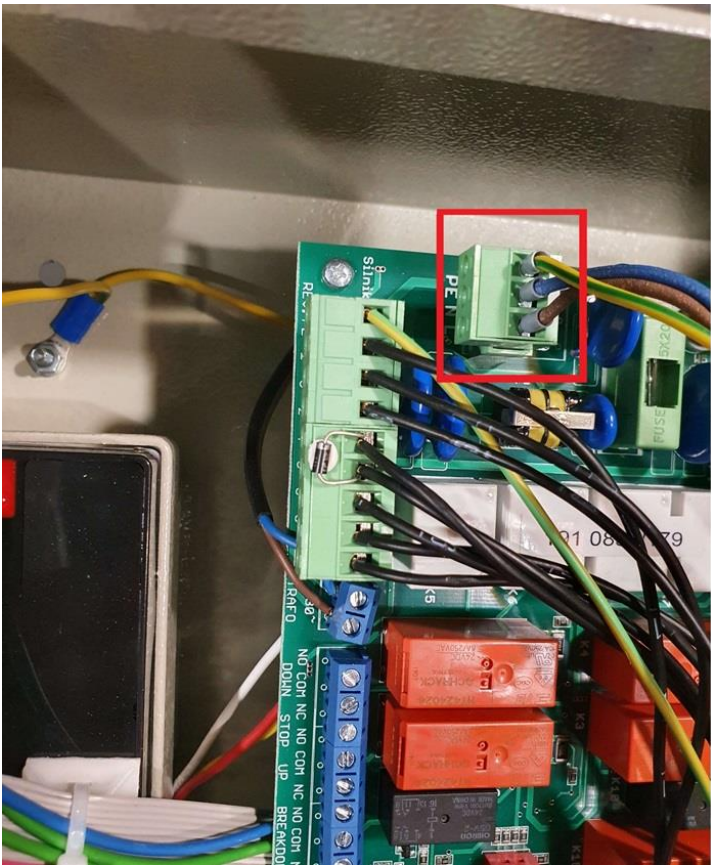


- Connect the multi-core motor control cable to the selected channel. Connect the wires according to the wire numbering of the cable and what is described on the board. If the motor does not work properly (the OPEN button closes the door), swap the following cables: "2" and "3" (motor winding directional cables) and "7" and "8" (return signal cables from motor limit switches).

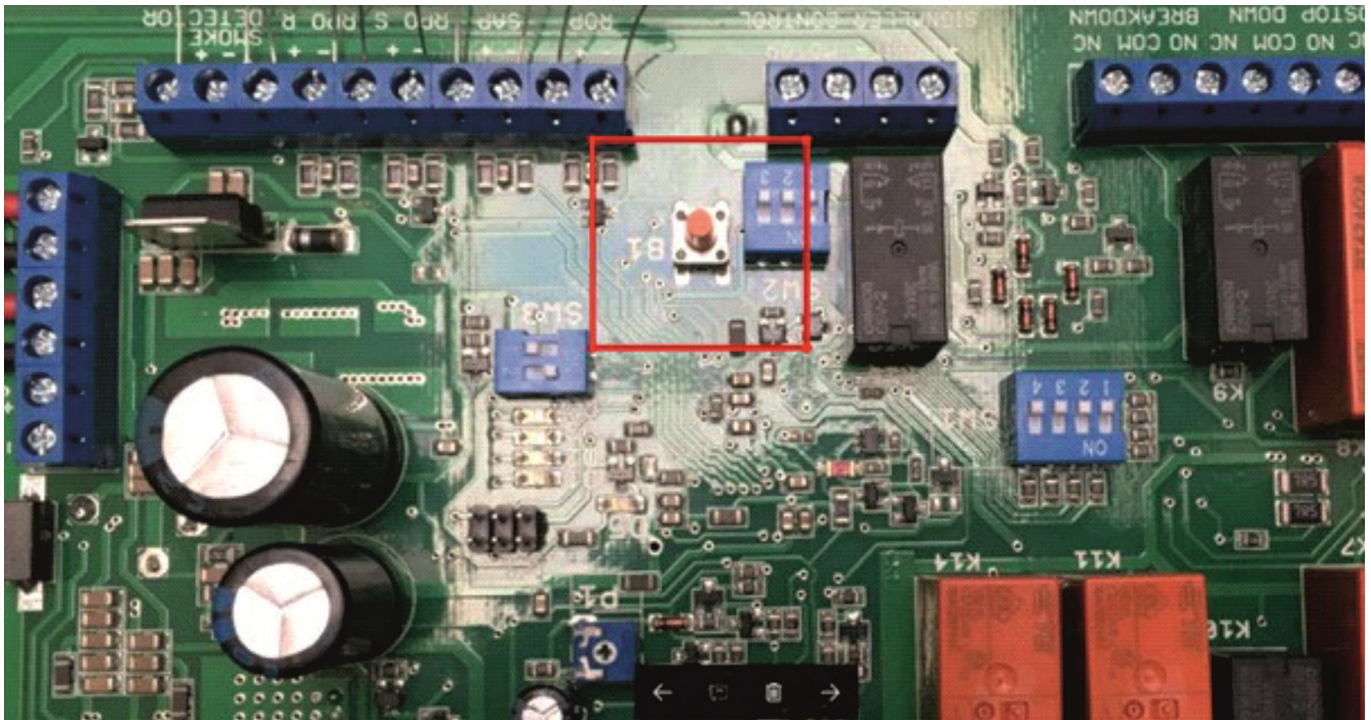


The diodes must remain connected

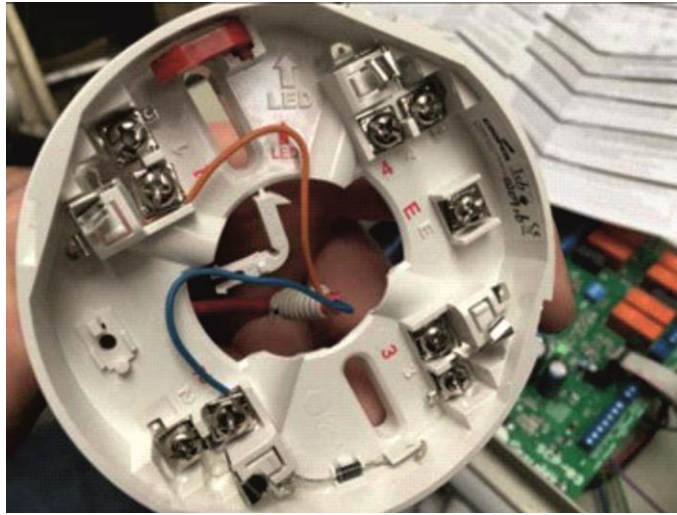
- Connect the main power supply (from the mains) as shown in the figure below



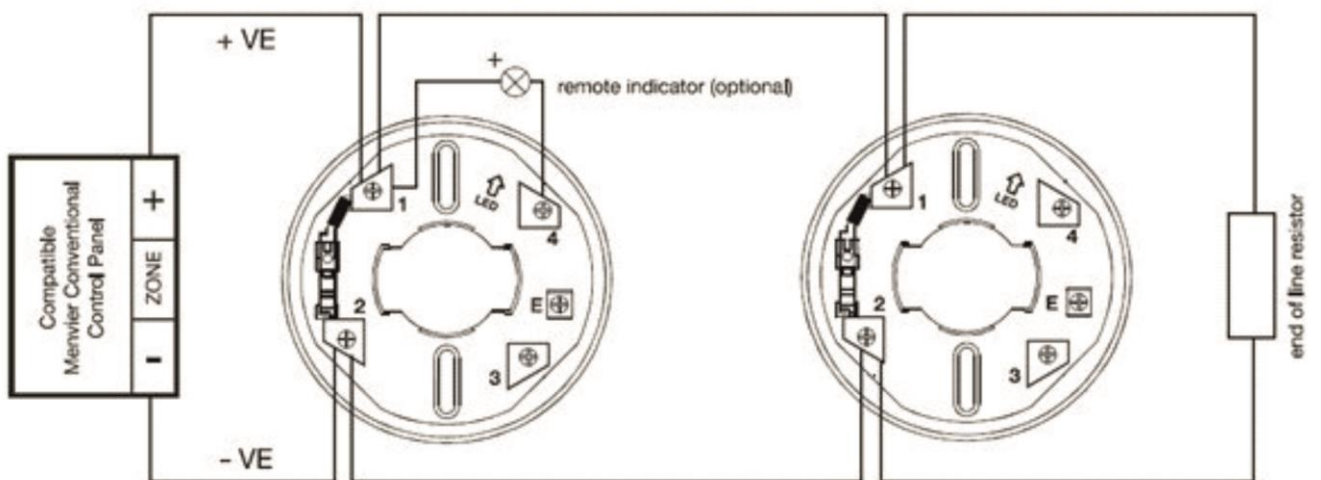
- Shortly after the mains power and batteries are connected, the panel may indicate errors. If only one motor is connected, the control panel will indicate that the other motor is missing, in which case it will be necessary to perform a reset according to the instructions below. The figure below shows the RESET button.



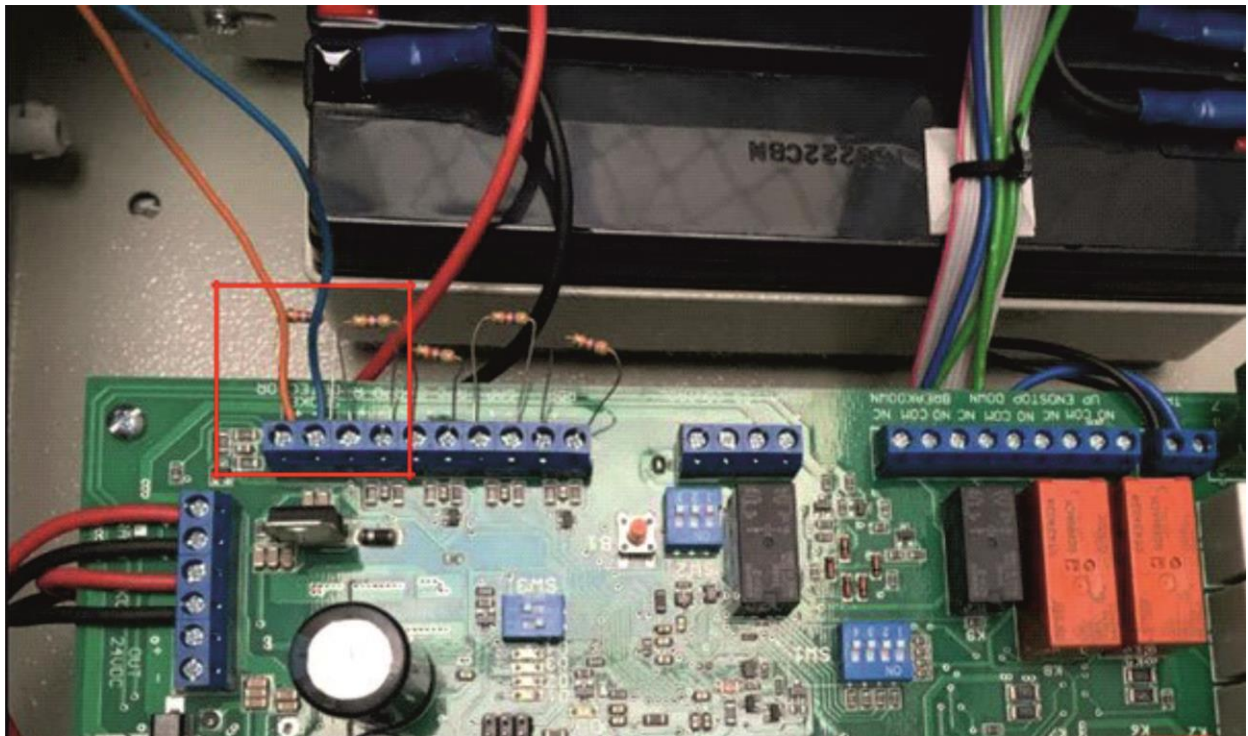
- Press and hold the B1 button during subsequent operations
 - Disconnect the batteries
 - Disconnect the main power supply
 - Reconnect the batteries
 - Reconnect the main power supply
 - Wait until LEDs D1, D2, D3, D4 flash simultaneously and go out
 - Release the B1 button
 - After a while the control unit should start to work (flashing green LED D5), D1-D4 are switched off
- Check that the front panel LEDs are off and do not indicate any errors. If errors occur, repeat the startup process again
 - Have smoke detectors ready



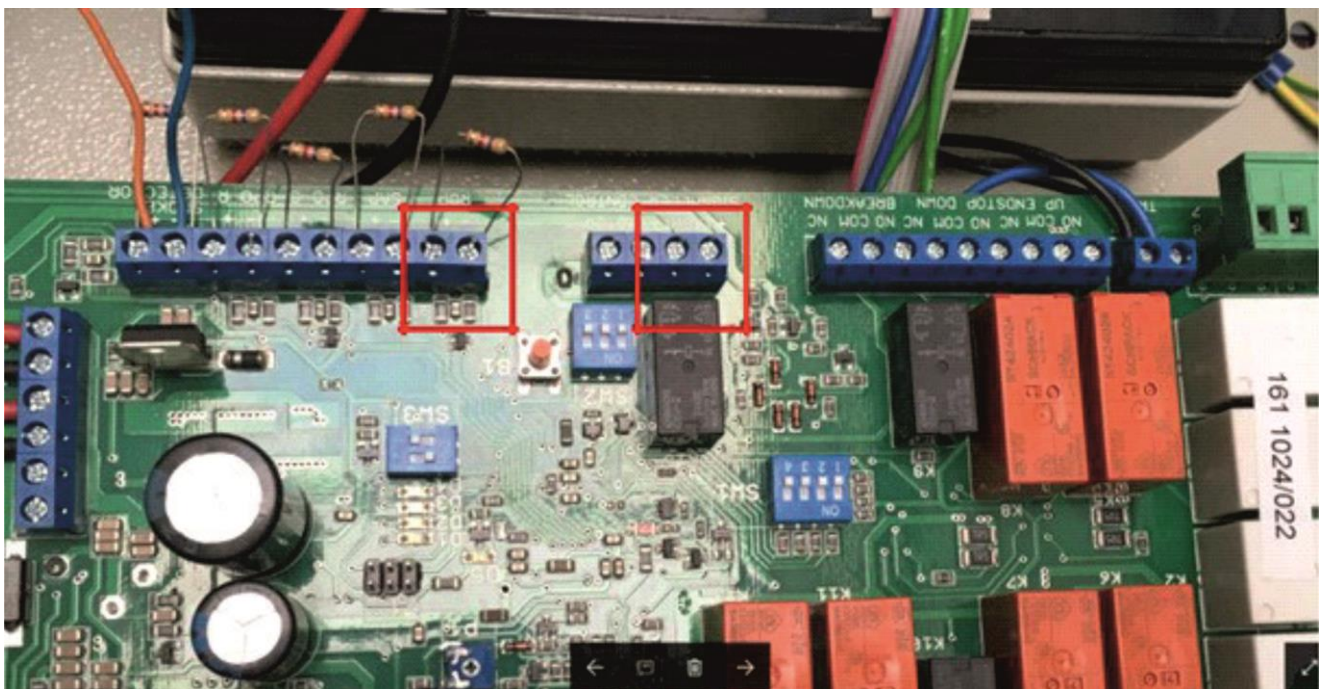
Smoke detectors must be wired in a row as shown in the figure included in the box with the unit.



- The first smoke detectors in a row must be connected to the “SMOKE DETECTOR” pins. The 4.7k Ohm resistor must remain connected. Keep in mind the correct polarity (+ with +, - with -).



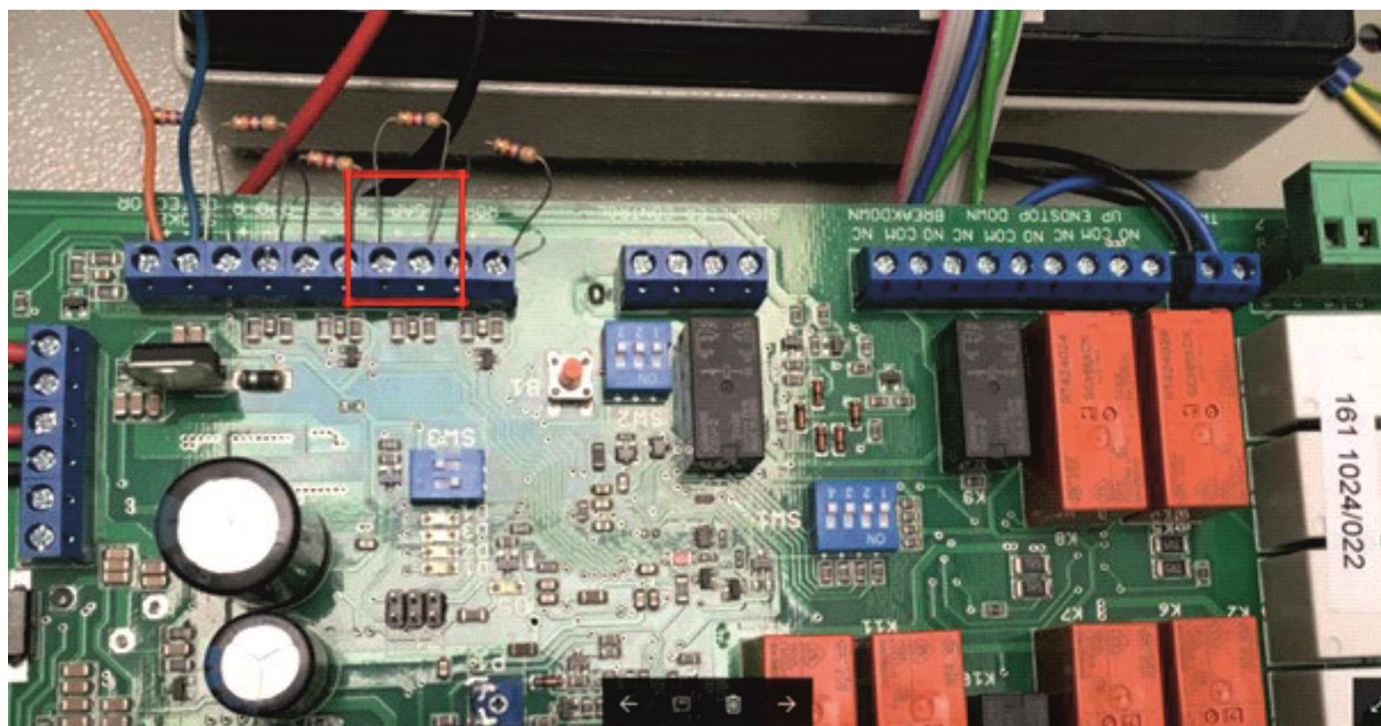
- Connect other devices
 - Siren/signal to “LIGHT SIGNALER”
 - Emergency release button for “ROP”



- Hold B1 button for 2 seconds to reset the software
- Correct connection: Green LED D5 should flash, LEDs D1-D4 are off

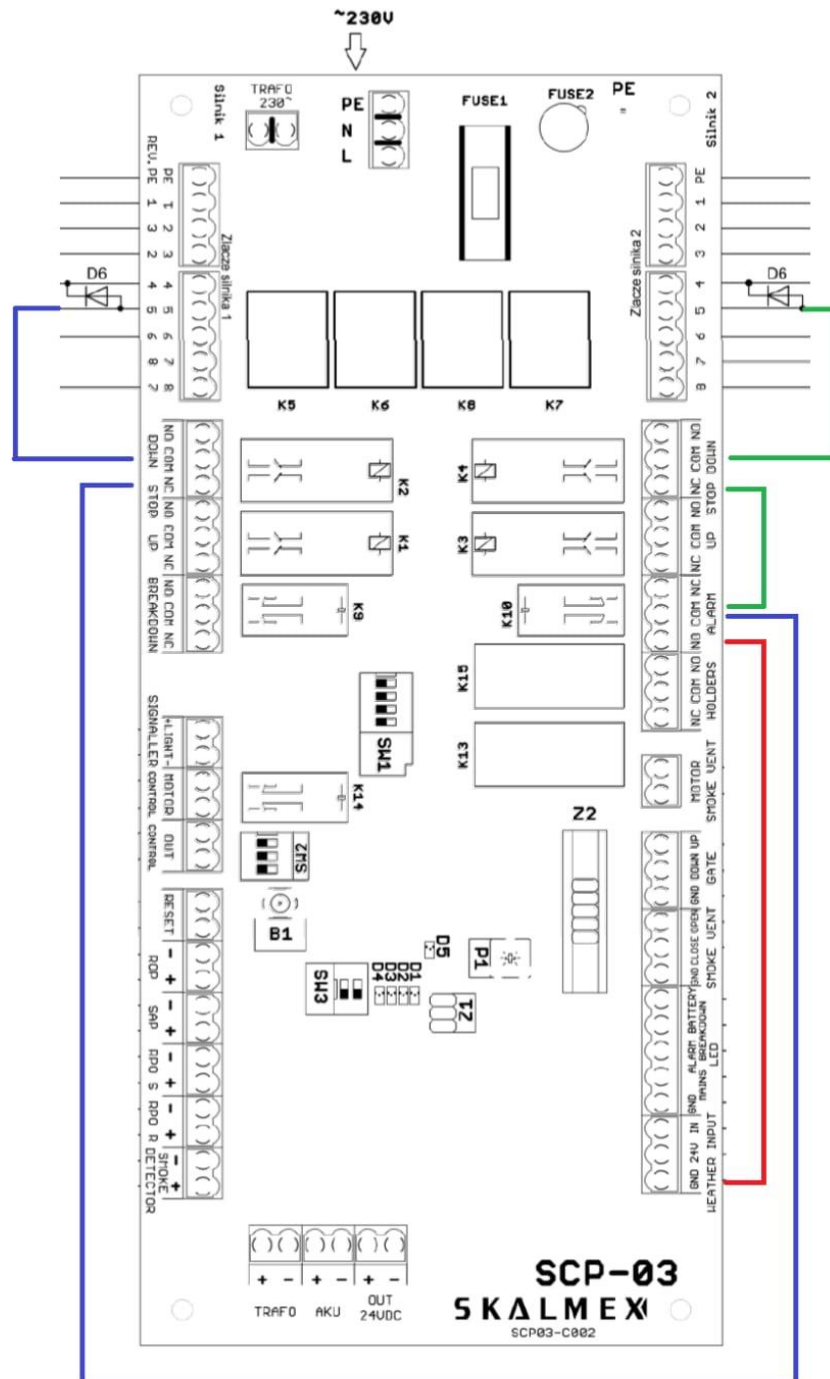
STEP BY STEP CONNECTION INSTRUCTION - SCP-03 CONTROL PANEL CONNECTED TO BMS (GENERAL BUILDING MANAGEMENT SYSTEM)

- follow steps 1-9 from the previous section
- BMS cable must be connected to the SAP contact
- perform steps 12-13 as in the previous section



NOTE! In order to prevent the drive rope from coming loose when the door closes in an emergency, the connection must be made according to the diagram below:

stopping of the lower limit switch during an alarm



ATTENTION!

When setting the limit switches, but also during normal use of a gate equipped with a fire tubular motor, avoid excessive raising and lowering of the gate. If the gate is operated continuously for more than 4 minutes, the thermal switch may overheat, causing the brake to disengage and the gate to close. You will not be able to lift again until the brake has cooled down, which can take 20-30 minutes.